

Micromotors / Lighting systems / Loupes

Articulators / Ultrasonic cleaners

Microscopes / Precision scales / Amalgamator

Microtorches / Prophy mate polishers

Scalers / Apex locators / Intraoral cameras

Turbines / Curing lights / Whitening lamps

SCIENCETECH INSTRUMENTS

Manufacturers and worldwide exporters
of dental and laboratory equipment

catalogue
2013/14



>> **How to order:**

Tel. +65 6532 5596 **Fax** +65 65325598
531 Upper Cross Street, #04-46 Hong Lim Complex
050531 - Singapore

info@sciencetechinstruments.com
www.sciencetechinstruments.com



W9009 Complete set 0-35000rpm
Supplied with On/Off switch

Escort III

- * Portable and compact size
- * On/Off foot switch
- * Weight 1.25kg
- * Size 112x147x78mm
- * Forward and reverse switch
- * Powerful control box



W9009

W9008 Complete set 0-35000rpm
Supplied with rheostat

Escort II PRO

- * High quality fashionable new machine
- * A built in handpiece cradle and bit stand
- * One touch change of the driving direction for efficient operations
- * No noise, vibration or heat after long hours of operation
- * Ergonomic design easy to grip and suitable to give low work fatigue
- * Automatic safety overload protection system
- * Variable speed control
- * Weight 1.45kg
- * Size: 140x155x90mm



W9008



W9015 Complete set 0-35000rpm
Supplied with On/Off foot pedal

Mighty

- * Protective plastic cover
- * Powerful control box
- * Forward & reverse switch
- * Compact and portable size
- * Continuous variable speed control
- * On/Off foot switch



W9015



Control unit:

- * Voltage: 110/220V
- * Cycle: 50/60Hz
- * Electric Power: 45W
- * R.P.M.: handpiece max
- * Weight: 1.3kg
- * Dimensions: 118(W)x156(D)x83(H)mm

Motor handpiece:

- * Nonload: 0-35.000rpm
- * Max torque: 300gf-Cm
- * Electric Power: controller max
- * Weight: 214g
- * Dimensions: 152(L)x28.9(D)mm



Marathon N7

- * Compact and ergonomic design
- * Powerful torque and continuous variable speed control
- * Easy change of the driving direction for efficiency
- * Automatic stop and red light on with beeping sound when overloaded
- * Variable speed control by hand or foot pedal.
- * Weight 1.5kg
- * Size 115x147x96mm

Available in two designs : traditional shape W9005 and the latest introduced shape W9005N



W9005



Marathon N7

W9005 Complete set 0-45000rpm

Supplied with rheostat

Marathon N7 NEW

W9005N Complete set 0-45000rpm

Supplied with rheostat



W9005N



Accessories

W9005H Handpiece 45.000rpm

W9009H Handpiece 35.000rpm

W9000C Carbon brush



W9016 Complete set 0-45.000rpm

Supplied with rheostat

Marathon N7R Eco 450

- * Powerful torque and continuous variable speed control
- * Easy change of the driving direction for efficiency
- * Automatic stop and red light on with beeping sound when overloaded
- * Variable speed control by hand or foot pedal.
- * Weight 1.6kg
- * Size 141x186x97mm

W9016



W9014



W9014 Complete set 0-45.000rpm

Floor type foot lever system

Excel 450

- * Carbon brush motor
- * Speed: 0-45000rpm
- * Auto-cruise function
 - * Powerful torque
- * Continuous variable speed control
- * No heat after hours of operation
 - * Voltage: 100-120V/200-240V
 - * Cycle: 50/60 Hz
- * Electric power: 50VA
 - * Weight: 2.8kg
- * Dimensions: 245(W)x260(D)x105(H)mm





BRUSHLESS MICROMOTORS

W9027 Complete set 0-50.000rpm

Supplied with rheostat

Marathon Eco 1000

Very high power, brushless controller.
With a round cradle for the motor
handpiece and digital LCD.
Easy movable to anywhere.
*speed range: 1000~50000rpm
*torque: 7.8 Ncm



W9027

W9013 Complete set 0-50.000rpm

Floor type foot lever system

Excel 800

Brushless controller, floor type work attached with its foot lever system.
Auto-cruise function for convenient and perfect work.
No over-heating even after a long hour performance thanks to an effective ventilation design.
Torque: 7.8 Ncm



W9013



BRUSHLESS MICROMOTORS

W9006 Complete set 50.000rpm

Supplied with rheostat

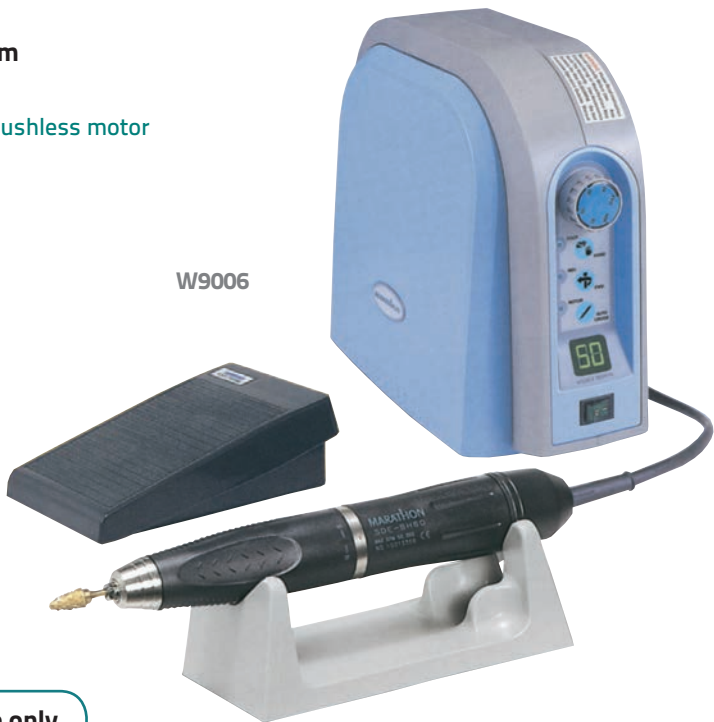
Multi 600 Standard Laboratory brushless motor

- * Speed: 1000-50000rpm
- * Low noise * Low vibration
- * Excellent durability
- * Ceramic ball bearing
- * Ergonomic design
- * Vertical design for desktop
- * Foot or hand operated
- * Self diagnosis function
- * Error code display function
- * Weight: 3.1kg
- * Size: 122x268x237mm

Also available:

Multi 600

knee control style with a
mountig bracket



W9006

W9006H Brushless Handpiece only

W9007 Complete set 50.000rpm

Supplied with rheostat

Handy 701 Laboratory brushless motor

- * Digital speed display: 1000-45000rpm
- * Rotation speed display mode
- * Vertical & portable type
- * Variable speed control by hand dial or foot pedal
- * Self diagnosis system; error code display function
- * Auto cruise speed function
- * Round cradle for handpiece mounted inside controller
- * Convenient magnetic burr holder
- * Max power: 230W
- * Max torque set mode: 8.5N cm
- * Weight: 2.7kg
- * Size: 137x232x180mm



W9007

Also available:

W9025 Handy 700 dual control system brushless and brush micromotor.

W9026 Handy 702 two handpiece connectors

LABORATORY DIVISION

FULGOR ULTRASONIC MACHINES



U050M

Item code	U 050M
Model	Fulgor 700
Capacity	0,7 lt
Dimensions	length x width x height 145 x 85 x 65 mm
Power	30 W
Timer	0 - 30 min
Heater	NO
Discharge valve	NO
Volume	length x width x height 170 x 100 x 140 mm
Accessories	U 050MB basket

U051M



Item code	U 051M
Model	Fulgor 2000
Capacity	2 lt
Dimensions	length x width x height 150 x 140 x 100 mm
Power	50 W
Timer	0 - 30 min
Heater	0 - 80° C
Discharge valve	NO
Volume	length x width x height 160 x 150 x 210 mm
Accessories	U 051MB basket



U058M

Item code	U 058M
Model	Fulgor PRO 200X
Capacity	2,5 lt
Dimensions	length x width x height 150 x 140 x 150 mm
Power	50 W
Timer	0 - 30 min
Heater	0 - 80° C
Discharge valve	NO
Volume	length x width x height 160 x 150 x 250 mm
Accessories	U 058MB basket



U056M

Item code	U 056M
Model	Fulgor 2200
Capacity	2,2 lt
Dimensions	length x width x height 235 x 135 x 67 mm
Power	50 W
Timer	0 - 30 min
Heater	0 - 80° C
Discharge valve	NO
Volume	length x width x height 260 x 160 x 190 mm
Accessories	U 056MB basket

LABORATORY DIVISION

FULGOR ULTRASONIC MACHINES



Item code	U 052M	U053M
Model	Fulgor 3000	
Capacity	3 lt	
Dimensions	length x width x height 235 x 135 x 100 mm	
Power	100 W	
Timer	0 - 30 min	
Heater	0 - 80 °C	
Discharge valve	YES	NO
Volume	length x width x height 260 x 160 x 230 mm	
Accessories	U052MB basket U052A beaker set (beaker holder + 2 beakers)	



Item code	U059M
Model	Fulgor PRO300X
Capacity	4 lt
Dimensions	length x width x height 235 x 140 x 150 mm
Power	150 W
Timer	0 - 30 min
Heater	0 - 80° C
Discharge valve	YES
Volume	length x width x height 260 x 160 x 300 mm
Accessories	U059MB basket



Item code	U054M
Model	Fulgor 4000
Capacity	4 lt
Dimensions	length x width x height 300 x 150 x 100 mm
Power	150 W
Timer	0 - 30 min
Heater	0 - 80° C
Discharge valve	YES
Volume	length x width x height 320 x 170 x 230 mm
Accessories	U054MB basket



Item code	U055M
Model	Fulgor 9000
Capacity	9lt
Dimensions	length x width x height 300 x 240 x 150 mm
Power	200 W
Timer	0 - 30 min
Heater	0 - 80° C
Discharge valve	YES
Volume	length x width x height 320 x 260 x 290 mm
Accessories	U055MB basket

U064 Adjustable ultrasonic machine - 4lt

Ultrasonic cleaner with digital display.
Featuring adjustable power (60 to 100W)
and adjustable frequency (20 to 40Khz).
Heating: 0-80 degrees.
Timer: 0-60 minutes.
With discharge valve.
Capacity: 4lt
Tank size (LxDxH): 235x168x290mm
Net weight: 4kg

U064



ACCESSORIES FOR ULTRASONIC MACHINES



Baskets and beakers

For item code of baskets and beakers please refer to the pages dedicated to ultrasonic machines

U026 Scoop for ultrasonic machine

ACCESSORIES FOR ULTRASONIC MACHINES



U070

U070 Plastic ultrasonic cleaner 600ml

Ultrasonic cleaner with LCD display.
Power: 50W
Frequency: 43khz
Tank capacity: 600ml
5 Timers: 01'30", 03'30", 04'30", 06'00", 07'30"
Volume: 206x175x147mm.



H1308B

Innovative articulator, allow to operate without using dental plaster.

- * save working time
- * save cost of dental plaster
- * easy and fast mounting
- * better presentation to dentist
- * protect the original plaster model
- * wide range of accessories
- * very light and comfortable
- * affordable price

H1308B Articulator Magicart 1, half mouth



H1308A

H1308A Articulator Magicart 2, full mouth



H1308

H1308 Articulator AT100

E100 Simplex Articulator is simple to use and accessible to multifarious occlusion adjustments.

1. It allows vertical, hinge and lateral movement. Also, it allows retrogressive movement slightly.
2. It has metal-magnetic plates. This enables remounting conveniently.
3. The upper member can be maintained in a level by using the rear adjusting screw even if the incisal pin is removed.



H1309

H1309 Articulator PRO AT500

C.S.A. 500 Articulator has Spring-Sliding System which enables smooth lateral and protrusive movements.

1. The frame design provides fully open access from the lingual position for easy access and optimum posterior access. It guarantees visibility during laboratory procedures.
2. The bended frame design enables "30 degree standing" for optimum viewing
3. Interchangeable plates are included
4. The rounded edges and frame corners improve feel of operation, and the light weight aluminium frame enhances the efficiency of operation
5. The UV curable coated C.S.A 500 Articulator has increased chemical resistance and temperature endurance adding elegant refinement



LABORATORY DIVISION

TANGENT PRECISION SCALES



Precision pocket scales, accuracy 0,1g.

B1060 Tangent 120g x 0.1

B1061 Tangent 200g x 0.1

B1062 Tangent 300g x 0.1

CALIPERS



H1246 Electronic caliper
0/15 mm

Precision 0,01mm

H1246



H1245 Dial caliper
0/10 mm

Precision 0,1mm

H1245

MICROTORCHES

Made in Japan



M1360



M1361

M1360 Microtorch GB 2001

Dimensions: 85x143x46mm

Weight: 214g

Capacity: 26g

Time length: 2 hours.

Flame temperature: 1300°

M1361 Microtorch GT 3000

Dimensions: 85x143x46mm.

Weight: 214g

Capacity: 10g

Time length: 30 minutes.

Flame temperature: 1300°



H1311N

H1311N DS140N - Digital wax carving pencil, 1 pen

Power: 12W
 Temperature: 50° C - 200°C
 Dimensions: 76x119x63mm
 Weight: 0,56kg



H1306

H1306 DS110 - Digital wax carving pencil, 2 pens

Power: 20W
 Temperature: 50° C - 200°C
 Dimensions: 119x159x73mm



H1305

H1305 DS400 - wax pot 4 compartments

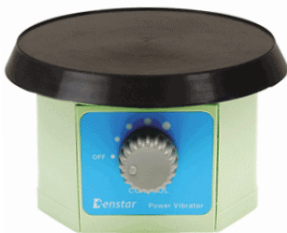
Power: 120W
 Temperature: 50° C - 120°C
 Dimensions: 192x114x70mm

H1312 DS200 - wax pot 1 compartment

Power: 60W
 Temperature: 50° C - 120°C
 Dimensions: 108x137x70mm



H1312



H1323

H1323 DS530 - power vibrator

Power: 110W
 Dimensions: 140x140x76mm
 Weight: 1,6kg



N1312 Wax heater HEATING CLEAR

The heating clear is the safe alternative to bunsen burners and open flame devices. It allows technicians to use their desired waxing tools. It heats up instantly and is easy to use: just hold the pen in the cavity and the pen is heated and ready to use.

Technical features:

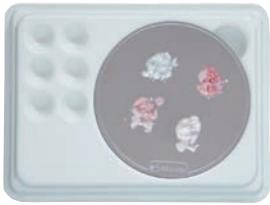
INPUT AC 220V - 240V 50/60 HZ - POWER 100W FUSE T2AL 250V.
 Dimensions: 91x209mm - height 89mm. Weight: 600grams



N1312



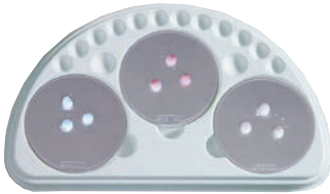
H1314



H1314 Porcelain plate, small size

Dimensions: 152x115 mm
 Contents: * permanent metal filter, 1pc
 * absorption paper, 10 sheets
 * porous ceramic base, 1pc

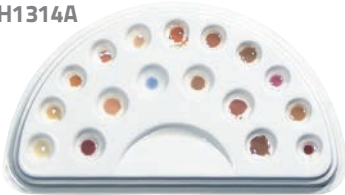
H1315



H1315 Porcelain plate, medium size

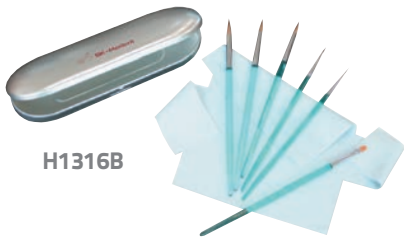
Dimensions: 320x184 mm
 Contents: * permanent metal filter, 3 sheets
 * absorption paper, 30 sheets
 * porous ceramic base, 3pcs

H1314A



H1314A Porcelain plate, 17 colors

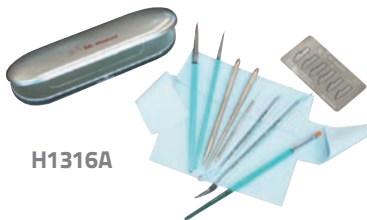
Dimensions: 320x184 mm



H1316B

H1316B Brush set 6pcs

Brush set, contents: porcelain build-up brushes #8, #6, #4, #2, #0;
 porcelain opaque brush #4



H1316A

H1316A Build-up full set

Complete set, contents: porcelain brushes, mixing stick,
 painting stick, porcelain blade, porcelain carving



H1317C

H1317C Porcelain powder scoop set

Metric scoop for dental cement, resin and porcelain powder.
 Can be used for precise and clean measuring.



H2100N

H2100N Portable magnifying lamp with fluorescent light

Lamp with lens cover.
Magnification: 1,75x (and additional 4x).
12W fluorescent light.
Height: 37cm

H2100A Spare bulb



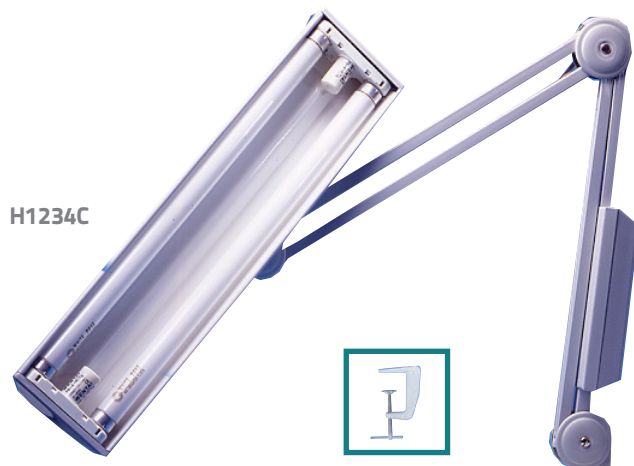
H1900



H1900 Working lamp with security cover (clamp included)

Working lamp with security cover (in silver color, to increase the light strength).
3 fluorescent bulbs, 14W each, energy saving.
Dimensions: the arm is composed of 2 parts for 50cm each.

H1900B Spare bulb



H1234C



H1234C Table lamp 2 tubes (clamp included)

Working lamp, 2 bulbs x 14W.
Dimensions: the arm is composed of 2 parts for 50cm each.

H1234BB Spare bulb

H1234CS Spare starter



H1233

H1235C Round lamp with magnifying lens
(clamp included)

Working lamp with 3 diopter magnifying lens (1.75x).
Lens diameter: 12,5 cm.
Light: 22W bulb.
Dimensions: the arm is composed of 2 parts for 50cm each.

H1235CB Spare bulb

H1238 Square lamp with magnifying lens
(clamp included)

Working lamp with 3 diopter magnifying lens (1.75x).
Lens size: 17.5 x 13 cm.
Light: 2 x 9W bulbs.
Dimensions: the arm is composed of 2 parts for 50cm each.

H1238B Spare bulb



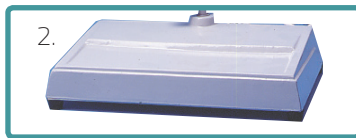
H1238

LAMP accessories



H1233W

H1234B



2.

H1235A



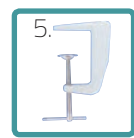
3.

H1235T



4.

H1235CC



5.

1. **H1233W Base with wheels**
2. **H1234B Table base (10kg)**
3. **H1235A Accessory for hanging on the wall**
4. **H1235T Accessory for holding**
5. **H1235CC Clamp**



H1300

H1300 UDS-K Ultrasonic piezo scaler, complete set

UDS-K:
 Ultrasonic piezo scaler.
 Functions: Scaling, perio
 Power Input: 220V-230V 50Hz/60Hz
 Output Power: 3W-20W
 Frequency: 28kHz±3kHz
 Water pressure: 0,01mPa
 Dimensions: 170mm x 111mm x 65mm
 Detachable handpiece
 Can be autoclaved under 135°C & 0,22mPa.
 5 tips are included.

UDS-P: Detachable handpiece, autoclavable. Scaling, perio, endo. Automatic frequency tracking. Also available with LED light, for better visibility.

H1535 UDS-P Ultrasonic piezo scaler, complete set

H1535L UDS-P LED Ultrasonic piezo scaler with LED light, complete set



H1535



H1535L

	UDS-P	UDS-P LED
Power Input	100V to 240V - 50Hz/60Hz 1.2A (MAX)	110V-50Hz/60Hz or 220-240V-50Hz/60Hz
Main unit input	30V DC- 1.3A	24V - 1.3A
Output power	3W - 20W	3W - 20W
Frequency	28kHz ± 3kHz	28kHz ± 3kHz
Water pressure	0.1bar ~ 5bar (0.01MPa ~ 0.5MPa)	0.1bar ~ 5bar (0.01MPa ~ 0.5MPa)
Main unit weight	0,68kg	0,68kg
Adapter weight	0.3kg	1.2kg
Dimensions	178mmx145mmx89mm	178mmx145mmx89mm

EMS COMPATIBLE

H1531 UDS-L ultrasonic piezo scaler, complete set



UDS-L:
 Scaler with built-out liquid container.
 *Three functions: Scaling, Perio and Endo.
 *EMS handpiece and tips compatible
 *Handpiece is cast from Titanium alloy to ensure maximum durability
 *Detachable handpiece, autoclavable under high temperature (135°C) and pressure (0,22MPa) avoiding cross infections effectively.
 *Soft and durable cable
 *Five pieces of scaler tips included in the package (1pc G1 - 1pc G2 - 1pc G3 - 1pc G4 - 1pc P1)
 *Digitally controlled, automatic frequency tracking ensures that the machine always works on the best frequency and more steadily

Technical specifications:
 Power input 220V-230V 50-60 Hz 150mA
 Main Unit Input 24V - 1,3A
 Output power 3W-20W
 Frequency 28Khz +/- 3khz
 Water pressure 0,01 MPa - 0,5 MPa
 Dimensions 186x105x60mm
 Weight 0,70Kg
 Adapter weight 1,2kg

H1536 UDS-E ultrasonic piezo scaler, complete set

H1536L UDS-E ultrasonic piezo scaler with LED light, complete set

UDS-E
 * Detachable handpiece, autoclavable.
 * Scaling, perio, endo.
 * Clinical solutions are applicable for automatic water supply mode, improving the performance of perio and endo function dramatically.
 * Less heat from tip during operation. Improve comfort degree of patients.

Also available with LED light, for better visibility.



SATELEC COMPATIBLE

H1530 D5 ultrasonic piezo scaler, complete set



D5:

- *Three functions: Scaling, Perio and Endo.
- *Satelec handpiece and tips compatible
- *Handpiece is cast from Titanium alloy to ensure maximum durability
- *Detachable handpiece, autoclavable under high temperature (135°C) and pressure (0,22MPa) avoiding cross infections effectively.
- *Soft and durable cable
- *Scaler tips included in the package: 2pcs GD1 - 1pc GD2 - 1pc GD3 - 1pc GD4 - 1pc PD1 - 1pc ED1
- *Digitally controlled, automatic frequency tracking ensures that the machine always works on the best frequency and more steadily

Technical specifications:

Power input 100V-240V 50-60 Hz 1,2A Max
 Main Unit Input 30 VDC - 1,3A
 Output power 3W-20W
 Frequency 28Khz +/- 3khz
 Water pressure 0,01 MPa - 0,5 MPa
 Dimensions 188x159x81mm
 Weight 0,65Kg

H1537 D7 ultrasonic piezo scaler, complete set

H1537L D7 ultrasonic piezo scaler with LED light, complete set



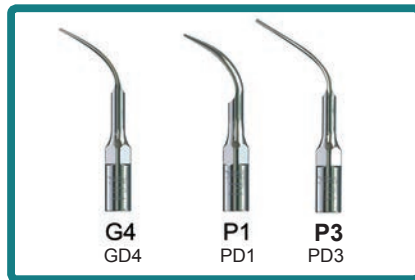
D7:

- * Detachable handpiece, autoclavable.
- * Scaling, perio, endo.
- * Clinical solutions are applicable for automatic water supply mode, improving the performance of perio and endo function dramatically.
- * Less heat from tip during operation. Improve comfort degree of patients.

Also available with LED light, for better visibility.

DENTISTRY LINE

TIPS FOR SCALERS



EMS compatible		Satelec and NSK compatible		Use	
Item Code	Description	Item Code	Description		
H1300A	G1	H1300L	GD1	Scaling	removal of supragingival tartar on front teeth and molars collar
H1300B	G2	H1300M	GD2	Scaling	removal of very hard tartar
H1300C	G3	H1300N	GD3	Scaling	removal of supragingival, subgingival or interdental tartar
H1300D	G4	H1300O	GD4	Scaling	removal and scaling of subgingival tartare
H1300E	P1	H1300P	PD1	Perio	removal and scaling of subgingival tartare
H1300F	P3	H1300Q	PD3	Perio	removal and scaling of subgingival tartare
H1300G1	E1 (120° angled mounter, 0,8mm hole)	H1300R1	ED1 (120° angled mounter, 0,8mm hole)	Endo	support for endodontic instruments used for cleaning and shaping the root canal or used for cavity preparation in endodontic surgery
H1300G2	E2 (95° angled mounter, 0,8mm hole)	H1300R2	ED2 (95° angled mounter, 0,8mm hole)	Endo	
H1300G3	E3	H1300R3	ED3	Endo	insert for gutta percha heating in all techinques that use lateral hot condensation

HANDPIECES FOR SCALER



H1300/1 Handpiece (EMS compatible)



H1300/1L LED Handpiece (EMS compatible)



H1530A Handpiece (Satelec compatible)



H1530AL LED Handpiece (Satelec compatible)



H1298

H1298 Curing light 100nw

Technical specification:

1. Wave Length: 420nm to 480nm
2. Light Output: 1000 nW/cm²
3. Dimension: 22mm x 22mm x 150mm
4. Net weight: 85g
5. Automatic power off

H1298A Spare fiber optic

H1298B Spare base charger

H1298C Spare battery



H3300

H3300 Curing light 800nW

Technical specifications

1. Power: 3 W
2. Light Output: 800nW/cm²
3. Wave Length: 420-480nm
4. Automatic power off
5. Dimension: 23x155mm
6. Weight: 150g

H3300A Spare fiber optic

H3300B Spare battery

H3300C Spare base

H3300D Spare charger



H3400

H3400 Curing light 1200nW with digital display

Technical specifications

1. Power: 5 W
2. Light Output: 1200nW/cm²
3. Wave Length: 420-480nm
4. Automatic power off
5. Dimension: 23x155mm
6. Weight: 150g

H3400A Spare fiber optic

H3400B Spare battery

H3400C Spare base

H3400D Spare charger

TURBINES

H3100 Turbine with 4 holes coupler

H3100D Turbine with 2 holes coupler



STANDARD TURBINE 1 SPRAY

Dental high speed turbine.
One spray, with push button, with quick coupling.
Supply air pressure: 177-216KPa (1.8-2.2kgf/cm²)
Turing speed: 300krpm Chuck type: push button type.
Bur type: standard burrs

H3100B Spare rotor **H3100C Spare bearing**

H1302 Turbine with 4 holes coupler

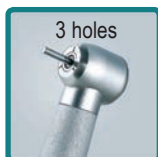
H1302D Turbine with 2 holes coupler



STANDARD TURBINE 3 SPRAY

Dental high speed turbine handpiece with push button, with quick coupling.
Supply air pressure: 177-294KPa (1.8-3.0kgf/cm²).
Turing speed: 310-350krpm Head height: 14,6mm
Head diameter: 12,4mm Chuck type: push button type
Bur type: standard burrs

H1302B Spare rotor **H1302C Spare bearing**



FIBER OPTIC TURBINE

Dental high-speed turbine handpiece with fiber optic with push button.
Supply air pressure: 177-294KPa (1.8-3.0kgf/cm²).
Turing speed: 310-350krpm
Head height: 14,6mm
Head diameter: 12,4mm
Chuck type: push button type
Bur type: standard burrs.
Kavo compatible

H3180 Set fiber optic turbine + multiflex coupling

H3180A Fiber optic turbine (without multiflex coupling)

H3180B Multiflex coupling only

H3180C Spare Rotor **H3180D Spare Bearing**



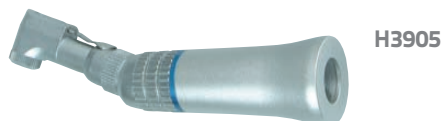
LOW SPEED TURBINES

Dental low speed turbine handpiece.
Supply air pressure: 245-313Kpa.
2,5-3,2 kgf/cm²
Turing speed: 20000 - 30000 rpm / min.
Bur type: standard burrs

H3903 Motor

H3904 Straight handpiece

H3905 Contra handpiece





H3804 Whitening Lamp

Portable & clip-on style

LED cold & blue light intensity $\geq 600\text{mw}/\text{cm}^2$
Quick and adjustable whitening time: 0-20mins.
Measurement: 320x220x100mm
Gross weight: 2kg

Technical data:
Power supply: AV110-240V 50HZ
Power: 60W
Power density: $> 6000\text{MW}/\text{cm}^2$
Coupling: Polyester mono-wave
Wavelength: 450-490nm

AMALGAMATOR

H1321



H1321 Amalgamator

This amalgamator is controlled by a microprocessor. It ensures a controlled, consistent mix thanks to its wide oscillating range, ("8" shaped) the mixing frequency, and the timing (from 1 to 99s).

Specifications:

Voltage: 220V/50Hz

Absorbed power: 200W

Forc movement

Mixing frequency 4350 tr / mn (cpm)

Amplitude: 25mm

Functioning intermittent

Programmable mixing time 1-99 sec

Dimensions: 32x27x18.5cm

Net weight 3.93 Kg



N4001 Intraoral camera SmartCam. For TV

Intraoral camera with RCA / VGA cable for video connection. Very high image quality. Beside the video connection this camera is equipped with a USB port to:

- * download images on your pc
- * use the usb cable to charge the camera directly from pc (alternatively you can charge with a/c adaptor)

Rechargeable lithium battery: support 100 minutes working time with a full charge.
Storage capacity: 3000 pictures
The MicroSD card is removable and can be replaced.
Powerful image processing chip allows to save, zoom, delete images.
Image sensor: 1/4 CMOS. 0,47 MegaPixel.
Resolution: 752*582 (PAL), 768*494 (NSTC)



N4002 Intraoral camera SuperCam. For PC

Intraoral camera with USB 2,0 connection. Compatible with the following operation systems: windows 2000/xp/vista/windows7 (32bit/64bit). System requirements: CPU Pentium 4, 2 GHz or higher
Imager: 1/4 inch CMOS.
Focus range: 5mm to 30mm.
Illumination: 6led
USB cable lenght: 2,5 meters.
Handpiece weight: 40g
RAM: 256 MB
Adjustable brightness directly from the computer functions.



N4000 Intraoral camera CamAssist. For PC and TV

Intraoral camera, can be used with TV/S-Video cable, with LCD/VGA cable and with USB/PC cable. High quality images, image sensor 1/4 Sony Super HAD CCD.
Focus: 5 to 45mm.
Illumination: 6 LED.
Cable lenght: 2 meters.
Weight: 46g
If used with pc it support windows 2000/xp/vista/windows7 (32bit).

Controller back side

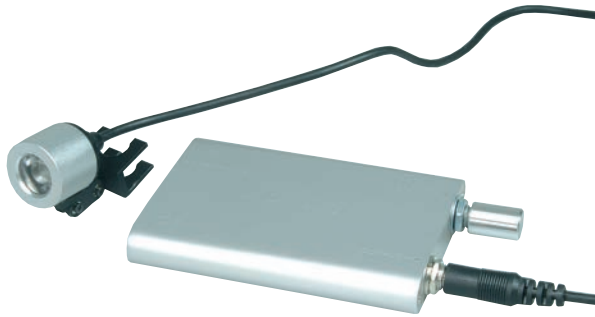




M1506A

M1506A Headband LED and galilean loupes 3x 340

Voltage: AC-110V/220V 50 Hz
DC-3,4V/2200Ahr
Power: 3W
Light color: 6000K



M1506

M1506 Light for galilean loupes

Voltage: AC-110V/220V 50 Hz
Light power: 1W
Light color: 6000k
Life of bulbs: 10000 hours
Continuous use for 6-7 hours with a fully charged battery

Application



H1316

H1316 Pulp Tester C-PULSE

The electric pulp tester is used to measure the level of local anesthesia prior to operative treatment.

The electric pulp tester can be a valuable tool in predicting potential anesthetic problems in operative (restorative) dentistry.

DENTISTRY LINE

GALILEAN LOUPES

M1496 2,5x - 340

M1496A 2,5x - 420

M1496B 3x - 340

M1496C 3x - 420

M1496D 3,5x - 340



**M1496
M1496A
M1496B
M1496C
M1496D**

Magnification	2,5x	
Working Distance	340	420
Depth of field	80mm	90mm
Field of view	90mm	100mm
Weight (lens only)	42g	42g

Recommended for first time users as it is the easiest loupe to adjust to. The most popular model among dental students and dental hygienists. Wide field of view and generous depth of field with high enough power for daily dental procedures.



M1540

Magnification	3x	
Working Distance	340	420
Depth of field	60mm	80mm
Field of view	60mm	65mm
Weight (lens only)	48g	48g

Recommended for those who need more power. If you are an experienced user of loupes and feel more power is needed. Or you need more precise observation, this model is for you.

Magnification	3,5x	
Working Distance	340	420
Depth of field	50mm	55mm
Field of view	55mm	60mm
Weight (lens only)	52g	52g

3,5x is the highest magnification available in Galilean loupes. Up to 3,5x, the surgical loupes provide vision not obtainable with the naked eye, and allows you to perform most dental procedures, including cosmetic, crown and bridge and, of course, endodontics easier and more effectively.

M1540 2,5x - 340

PRISMATIC LOUPES

M1504 Prismatic loupes 4x - 340

M1504A Prismatic loupes 4x - 420

M1505 Prismatic loupes 5x - 340

M1505A Prismatic loupes 5x - 420



**M1504
M1504A
M1505
M1505A**

Magnification	4x
Working Distance	340
Depth of field	40mm
Field of view	50mm
Weight (lens only)	80g

If you need a 4x magnification you will need to choose prismatic loupes rather than galilean loupes.



W9026HR Contra Angle

Model: SP-RE16
 Ratio: 16:1
 Connector diameter: 19,6mm
 File change: Push Button
 Type: Angle type



W9026H Contra Angle

Model: SP-CE
 Ratio: 1:1
 Connector diameter: 19,6mm
 File change: Button / Lever
 Type: Angle type



W9025HR Straight Nosecone

Model: ES04
 Ratio: 4:1
 Connector diameter: 19,6mm
 File change: Cam
 Type: Straight type



W9025H Straight Nosecone

Model: ES6
 Ratio: 1:1
 Connector diameter: 19,6mm
 File change: Cam
 Type: Straight type



W9800 Air Motor

SDE-AMI (Internal Water Spray)



W9801 Air Motor

SDE-AME (External Water Spray)





W9028 Endo a Class Endodontic Micromotor Handpiece

Cordless endodontic handpiece, can drive from 120 to 2000 rpm with its torque of 3.0 Ncm (16:1). Auto Stop Reverse ensures more safety for patients.

Model: Endo a Class
 Number of Program Memory: 4EA
 Battery type: 1.2V/100mAh (2PCS)
 Max Torque: 3.0Ncm (with ratio 16:1)
 Charge / Continuous use: 90min / 90 min
 Speed range: 120-2000rpm (4:1, 10:1, 16:1, 20:1)



Dimensions (Handpiece) with Angle: 27(W) 29(D) 195(H)
 Dimensions (Charging Station Unit): 98(W) 115(D) 60(H)
 Weight (Handpiece) with Angle: 138g
 Weight (Charging Station Unit): 171g



When a limit value of a present torque gets exceeded, the handpiece stops immediately and runs automatically in reverse direction.





W9029 Endo e Class Endodontic Micromotor Handpiece

Can drive from 20 to 2900 rpm with its strong torque of 9.9 Ncm (except 6:1).
Auto Stop Reverse ensures more safety for patients.
Various Reduction gear ratio available: (6:1, 8:1, 10:1, 16:1, 20:1, 64:1).



When a limit value of a present torque gets exceeded, the handpiece stops immediately and runs automatically in reverse direction.



W9029

SDE-EM24E for Endo e Class is the E-Type Motor that can be widely compatible with other contra angles.



Model: Endo e Class
Input: AC 100-120V 50/60Hz
AC 220-240V 50/60Hz
Number of Program Memory: 15EA
Max Torque: 9,9Ncm (except 6:1)
Speed range: 20-2900rpm (6:1, 8:1, 10:1, 16:1, 20:1, 64:1)
Dimensions (Handpiece) with Angle: 20(W) 168(L)
Dimensions (Charging Station Unit): 175(W) 125(D) 90(H)
Weight (Handpiece) with Angle: 125g
Weight (Charging Station Unit): 910g



W9005HE/A Autoclavable motor

Model: SDE-M33Es-B E-Type Motor
Non load rpm: 0-35000



Dimension (mm): L 104 x D 25.7
Weight (g): 142

W9005HE/A

W9005HE/B Motor with ventilation (not autoclavable)

Model: SDE-M25Es E-Type Motor
0-25000 rpm

W9005HE/C Motor with ventilation (not autoclavable)

Model: SDE-M33Es E-Type Motor
0-35000 rpm



Dimension (mm): L 98.4 x D 25.4
Weight (g): 160

W9005HE/B

W9005HE/C

W9005HE/D

W9005HE/D Motor with ventilation (not autoclavable)

Model: SDE-M40Es E-Type Motor
0-40000 rpm

PROPHY MATE POLISHERS

Spread evenly no splash, special design to avoid sucking backward and avoid blocking.
Easy to plug in and out, easy to clean and disinfect after use.
Small and handy, compatible to various types of other units.
360 degree rotation, clean hidden tartar effectively in any part of teeth.



H1313N
H1313T

H1313N Prophy mate polisher, 4 holes coupler

H1313T Prophy mate polisher, 2 holes coupler

H1313A Spare nozzle

H1313R Spare rubber belt

Prophy mate polisher model PRO.

Air micro polishing equipment. Advanced design and handy. It works connected to the handpiece tube and fits most turbine connections. Available 2 and 4 holes.

Technical specifications:

*air supply pressure: 3 - 4 bar

*water supply pressure: 0.7 to 4 bar

H1318 Prophy mate polisher, 4 holes coupler

H1318A Prophy mate polisher, 2 holes coupler

H1318T Spare nozzle

H1318R Spare rubber belt



H1318
H1318A

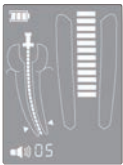


H1329

H1329 Woodpex I - Apex Locator

Accurate measurement & clear display

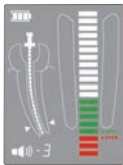
- * Special enlarged clear image display of apex.
- * Equipped with clear bright LCD, clear image and different colors indicate the trajectory of the file clearly
- * Based on advanced dual frequency network impedance measurement technology and automatic calibrating ensures the measurements are accurate
- * Measurement can be proceeded in wet canals, canals with blood, physiological saline, NaClO or H₂O₂.
- * The measurement can be applied to the different type of teeth, size of the root-canal and thickness of the file.
- * When doing the measurement, the changes of the sound can indicate the position of the file in the root-canal.
- * Work with four AAA batteries, low consumption of power and long working time.
- * Automatic power-off function: dump energy can be monitored by power indicator. The equipment will power off automatically after 5 minutes idel state for power saving.
- * The accessories of the Woodpex I can be autoclaved under the high temperature and high pressure, avoiding cross infection effectively
- * Fashionable design, compact, light weight and portable.



When the file reaches the front region of the apical foramen, the white bars are displayed.



When the file has gone to the position near by the apical foramen, the green bars are displayed.



When the file has exceeded the apical foramen, the red bars are displayed. A continuous beep sound will be generated at the same time.

Spare parts included



Measuring wire

Lip hook

Measuring file

File clip

Technical Specifications

Model	Woodpex I
Display	LCD 3.2"
Power	4pcs AAA batteries
Power Consumption	< 0.5 W
Temperature limitation	+5°C / +40°C
Humidity limitation	< 80%
Dimensions	85x74x121mm
Main unit weight	215g

H1340 Woodpex III - Apex Locator

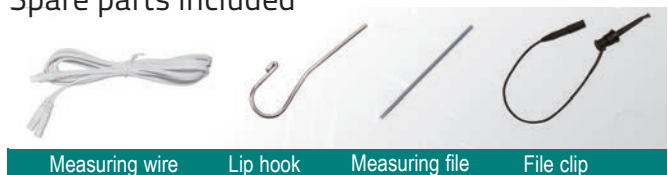


H1340

Accurate measurement & clear display

- * Special enlarged clear image display of apex.
- * Equipped with clear bright 4.5" LCD display, clear image and different colors indicate the trajectory of the file clearly
- * Foldable display for an adjustable visual angle.
- * Based on advanced dual frequency network impedance measurement technology and automatic calibrating ensures the measurements are accurate
- * Measurement can be proceeded in wet canals, canals with blood, physiological saline, NaClO or H₂O₂.
- * The measurement can be applied to the different type of teeth, size of the root-canal and thickness of the file.
- * When doing the measurement, the changes of the sound can indicate the position of the file in the root-canal.
 - * Works with rechargeable batteries
 - * Automatic power-off function: dump energy can be monitored by power indicator. The equipment will power off automatically after 5 minutes idel state for power saving.
 - * The accessories of the Woodpex I can be autoclaved under the high temperature and high pressure, avoiding cross infection effectively
- * Fashionable design, compact, light weight and portable.

Spare parts included

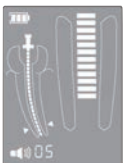


Measuring wire

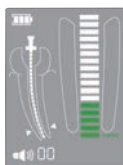
Lip hook

Measuring file

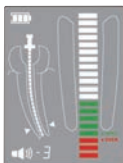
File clip



When the file reaches the front region of the apical foramen, the white bars are displayed.



When the file has gone to the position near by the apical foramen, the green bars are displayed.



When the file has exceeded the apical foramen, the red bars are displayed. A continuous beep sound will be generated at the same time. (the buzzer will alert when the endo file is less than 2mm to the apex).

Technical Specifications

Model	Woodpex III
Display	Foldable LCD 4,5"
Power	3,7V/750mAh
Power Consumption	< 0.5 W
Temperature limitation	+5°C / +40°C
Humidity limitation	< 80%
Dimensions	84x88x112mm
Main unit weight	336g

SCIENCETECH INSTRUMENTS

531 Upper Cross Street #04-46 Hong Lim Complex
050531 - Singapore

Telephone +65 6532 5596 Fax +65 6532 5598

info@sciencetechinstruments.com

www.sciencetechinstruments.com

